

# ASL1 样品测试说明及结果

1 · 测试坐标原点 (虚拟焦点  $x=0.011\text{mm}$ ,  $y=0.274\text{mm}$ ,  $z=-0.041\text{mm}$ )

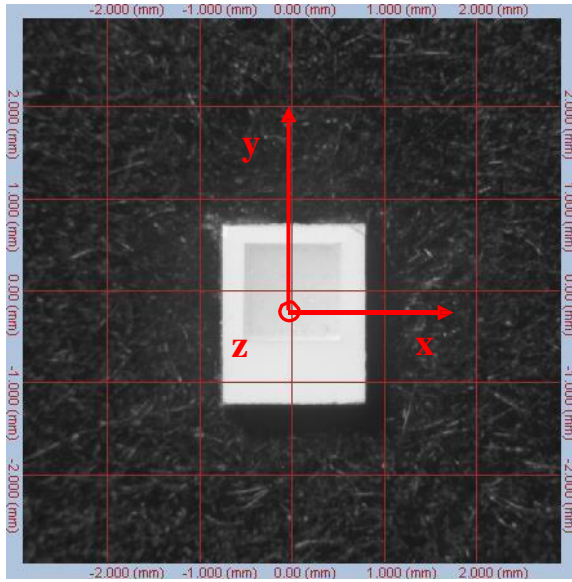


图 1  $I=0^\circ, A=0^\circ$

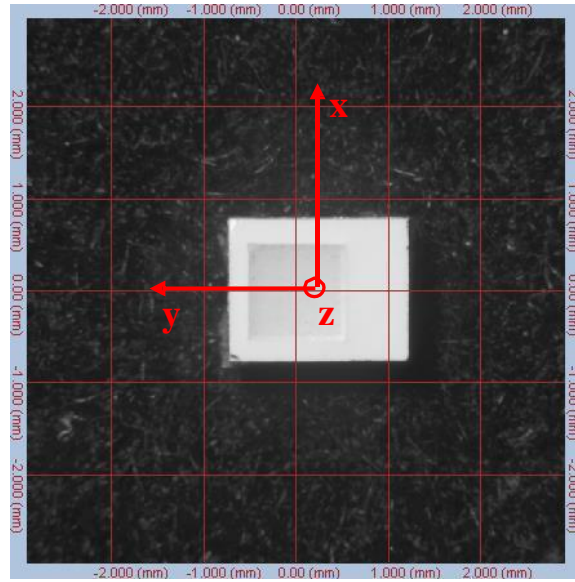


图 2  $I=0^\circ, A=90^\circ$

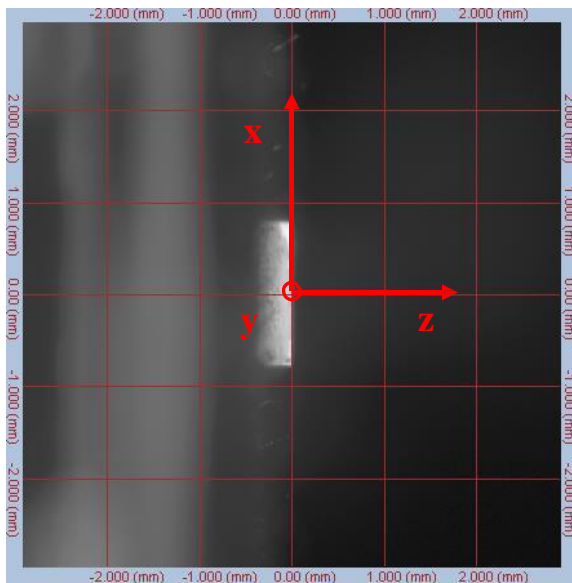


图 3  $I=90^\circ, A=90^\circ$

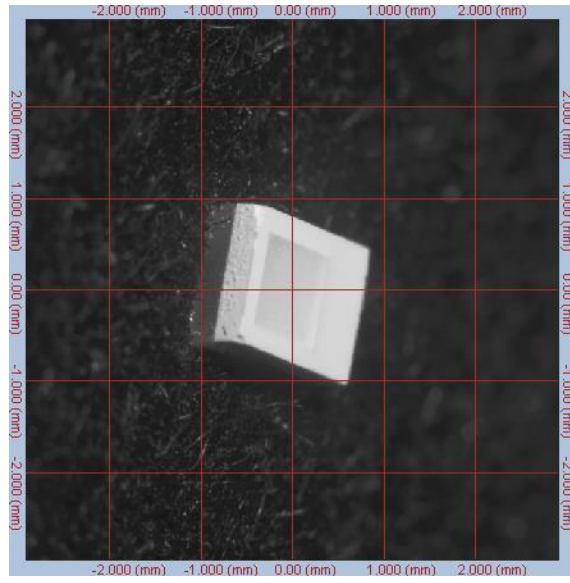


图 4  $I=50^\circ, A=75^\circ$